

Multilayered Skavsta

**Topography**  
The existing topography serves as the initial state, along with the productive forest. The natural terrain and elevation levels of the site are taken into consideration as an integral part of the project.

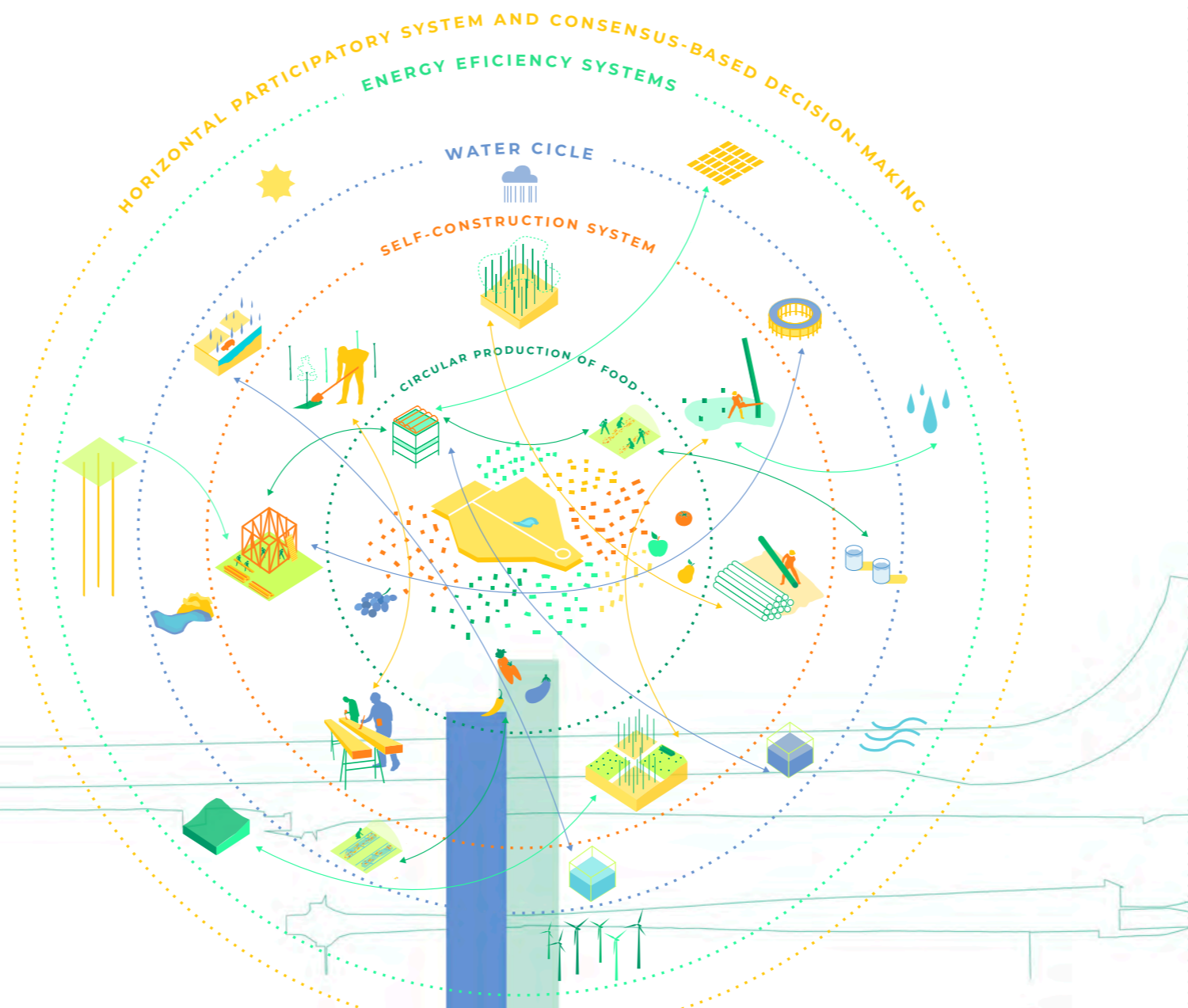
**Plaza and Boulevard**  
The vertical axis of the boulevard, which connects the three intersections and culminates in the grand plaza, disrupts the regularity of the checkerboard pattern to create a boulevard of significant urban intensity.

**Urban Facilities**  
80x80 grid. Addresses the urban facilities and specific road access (ambulances, loading and unloading of goods, firefighters, etc.).

**Di quæ repediæ**  
dolo etum veillas endæe sunt hil il eatur sitaturia doluptam aut volessimus iditibus doles-ti onsequatias doluptas veilt molorundem fugiam remedi-tias desequat labor antem harion consequenti quundus esendic toritatectæ

**Checkerboard Pattern**  
40x40 grid. A play of solid and void spaces within the forest that configure the neighborhood. The solid and void spaces alternate, creating a constantly changing character for the permanent structures. The soft architectures move towards the void spaces, creating "forest plazas".

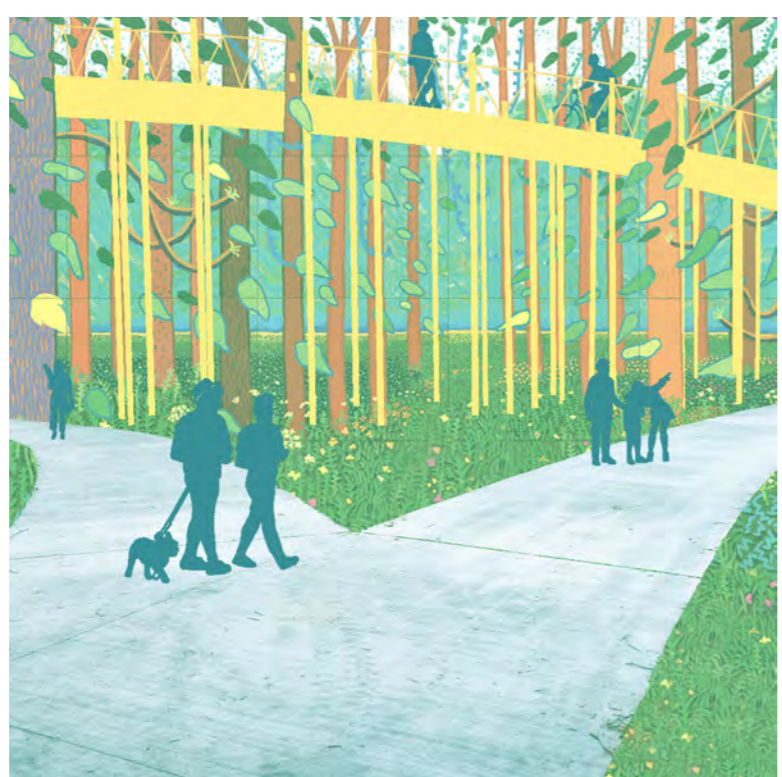
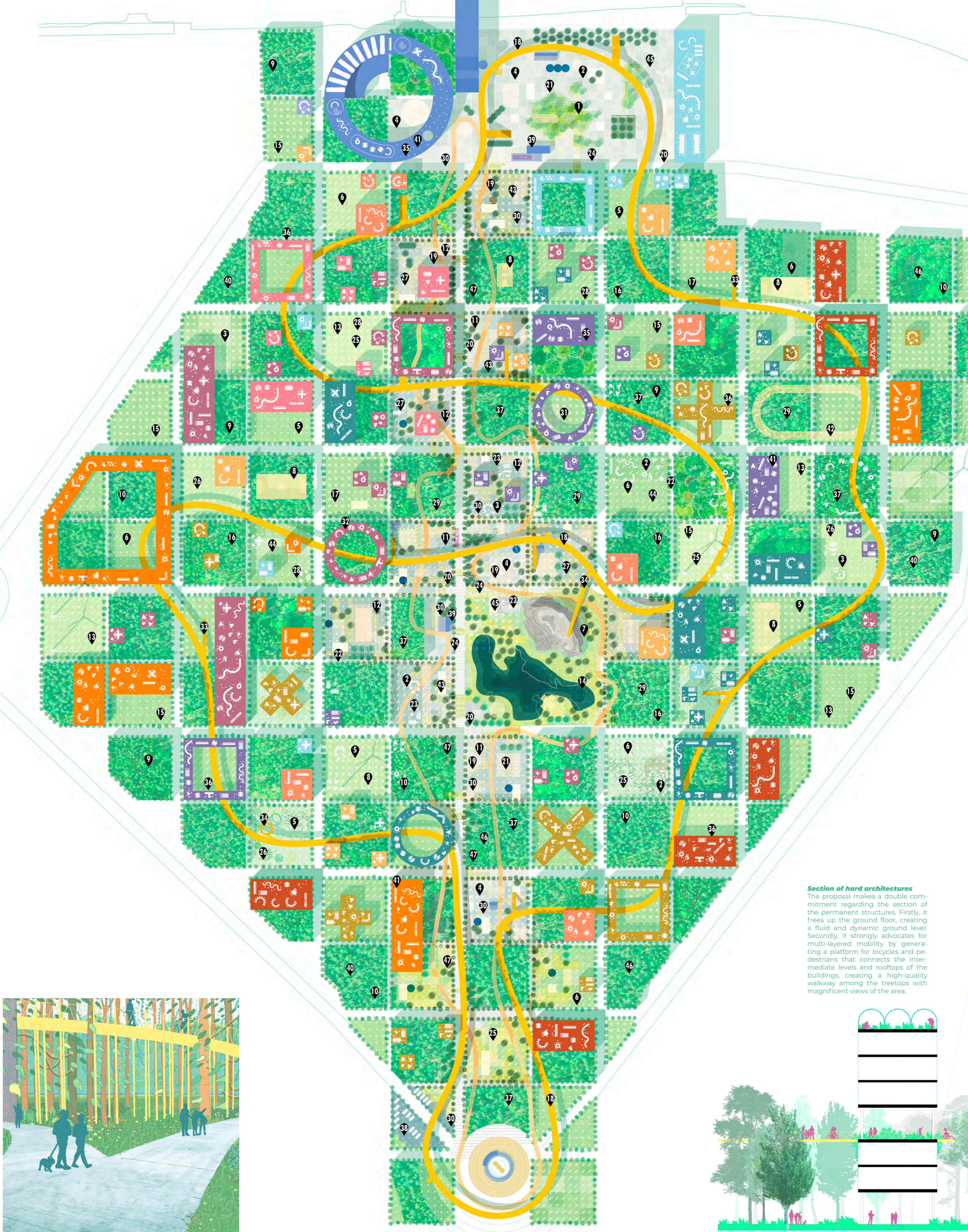
**pedestrian & bike pathway**  
Proposal of a multi-layered mobility by generating a platform-for-bicycles and pedestrians that connects the intermediate levels and rooftops of the buildings, creating a high-quality walkway among the treetops with magnificent views of the area.



Skavsta's mobility

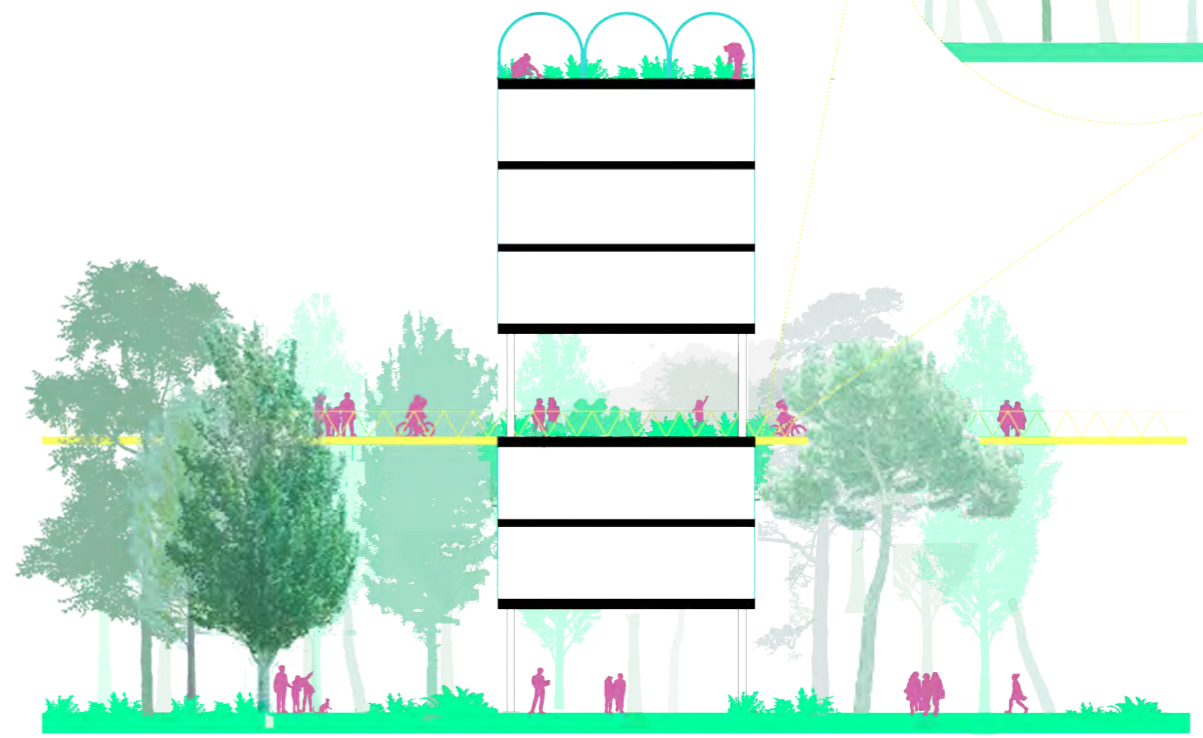


- Timber industry**
  - Sawmill
  - Timber store
  - Glulam factory
  - Timber recycling plant
  - Biomass power plant
  - Pulp and paper mill
  - Furniture factory
  - Wood carpentry building
  - Self-construction
  - Material warehouse
  - Machinery parking
  - Construction company
  - Architecture design office
  - Structural calculation office
  - Building engineering office
  - Furniture design office
  - Material testing laboratorie
  - Assembly workshop
  - Sustainable architecture consultancy
  - Metallic carpentry building
- Farming and food-processing industry**
  - Plant nursery
  - Seed store
  - Grain warehouse
  - Greenhouse
  - Urban garden
  - Compost processing plant
  - Green facades company
  - Hydroponic crops company
  - Crop and environment laboratory
  - Food processing plant
  - Packaging plant
  - Food miller
- Biotechnology industry**
  - Company headquarters
  - Research laboratory
  - Technology workshops
  - Congress Hall
  - Building office
  - Education and training building
  - 3D bioprinting lab
  - Biodegradation of plastics lab
- Pharmaceutical industry**
  - Company headquarters
  - Drug factory
  - Drug Development Centre
  - Building office
  - Technology workshops
  - Human microbiome research building
  - Vaccine factory
  - Pharmacology tasting centre
- Cultural cluster**
  - Coworking building
  - Marketing and advertising office
  - Recording studio
  - Multimedia library
  - AI design office
  - Exhibition building
  - Craft workshop
  - Communication agency
  - PR management company
- Technology industry**
  - Company headquarters
  - Manufacturing and production facilities
  - Product design area
  - Research and Development centre
  - Assembly workshop
  - Material warehouse
  - Robotics laboratory
- Internet and Videogames cluster**
  - Computer servers
  - Web design office
  - Cloud server centre
  - Videogame development company
- Mobility and transport**
  - Platform building
  - Bus station
  - Bus stop
  - Taxi stop
  - Pick and ride cycling box
  - Bicycle parking lot
  - Car parking lot
- Hotel and catering industry**
  - Restaurants
  - Cafes
  - Hotel
  - Short-stay housing
  - Researchers' housing
  - Stationary workers' housing
- Community uses**
  - Exhibition and showroom building
  - Convention hall
  - Training center
  - Data center
  - Business incubator
  - Human resources facilities
  - Public access marketing building
  - ICT assistance building
  - Childcare
  - Athletic track
  - Tennis court
  - Basketball court
  - Gymnasium
  - Plaza



Section of hard architectures

The proposal makes a double commitment regarding the section of the permanent structures. Firstly, it frees up the ground floor, creating a fluid and dynamic ground level. Secondly, it strongly advocates for multi-layered mobility by generating a platform for bicycles and pedestrians that connects the intermediate levels and rooftops of the buildings, creating a high-quality walkway among the treetops with magnificent views of the area.



Inter-species Platform

Furthermore, the elevated platform is equipped with a series of inter-species devices, such as connection networks, to enable certain animals to cross the boulevard safely. It also includes shelters for birds, bats, and other creatures, providing a habitat-friendly environment. The design aims to promote coexistence between human activity and wildlife, fostering a harmonious relationship with nature within the urban landscape.

